

PIARCO Flight Information Region

Piarco International Airport

[Piarco International Airport](#) is one of two international airports in the twin islands of Trinidad and Tobago, located in Piarco, a town in norther Trinidad about 25Km East of the capital city, Port of Spain.

General information

ICAO:	TTPP
IATA:	POS
Time zone:	UTC-4 (standard time)
Latitude:	10° 35' 34.99" N
Longitude:	61° 20' 55" W
Elevation:	57 ft
Transition Altitude:	4,100 ft
Transition level:	FL055
PIARCO VOR:	POS 116.9
PIARCO NDB:	TRI 382

No VFR traffic at night.

All medium and heavy jet aircraft with dual tandem landing gear must use turning bay to execute 180 degree turn on runway, except the MD80, DC9, Boeing 727, Boeing 737 and other similar types.

Communications

Name		Frequency
TTPP_ATIS	PIARCO Information	126.700
TTPP_DEL	PIARCO Ramp	121.750
TTPP_GND	PIARCO Ground	121.900
TTPP_TWR	PIARCO Tower	118.100
TTPP_APP	PIARCO Approach	119.000
TTZP_CTR	PIARCO Radar	123.700
TTZP_S_CTR	PIARCO South Radar	125.400

Runways

RWY	QFU	length	
10	104°	10495 feet	3199 m
28	284°	10495 feet	3199 m

Approaches

Runway 10

VOR ILS RWY 10

RNAV RWY 10

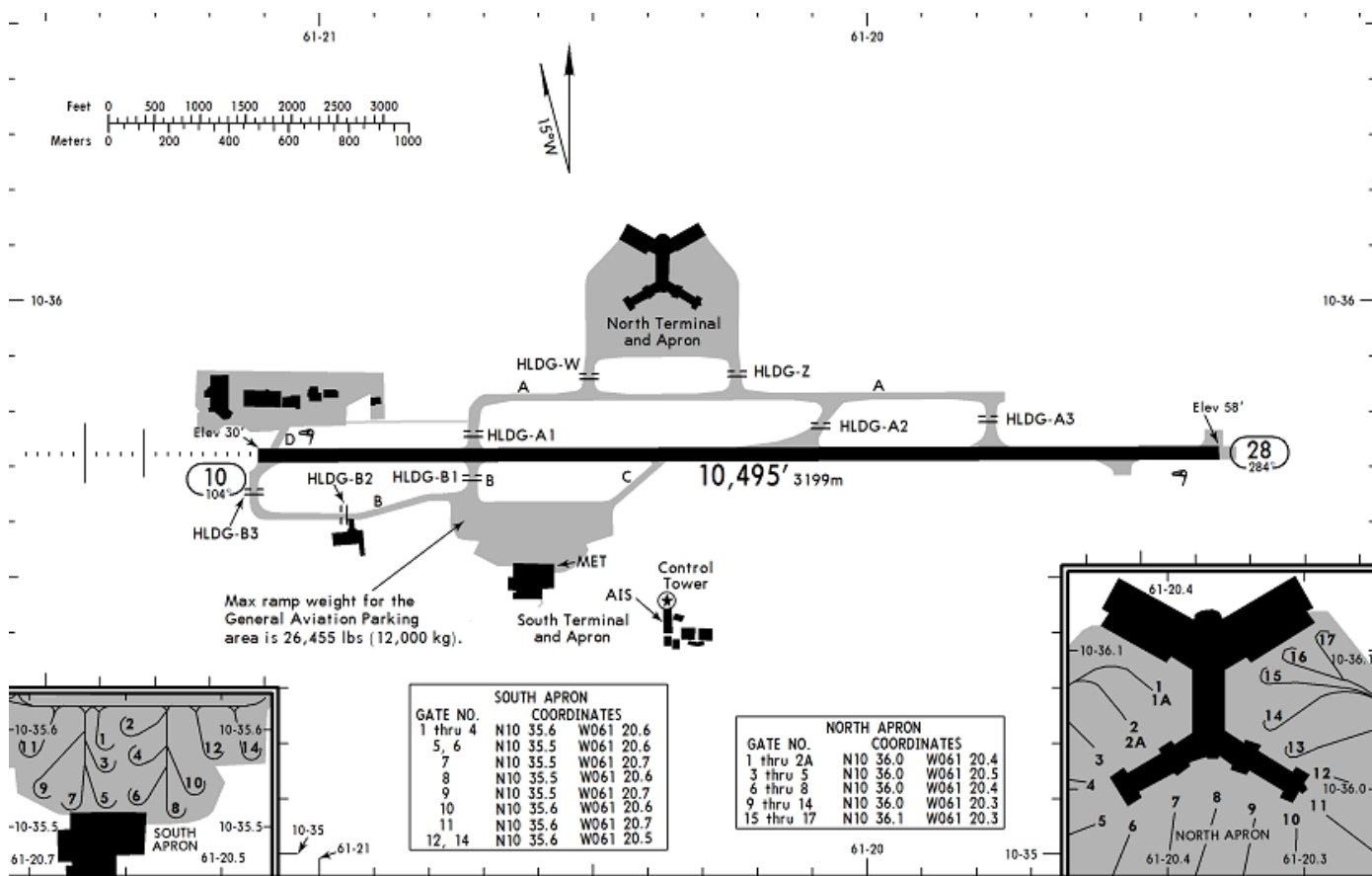
Runway 28

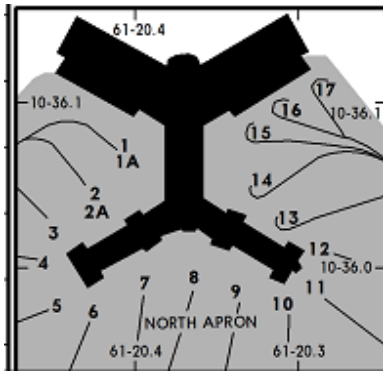
RNAV RWY 28

Airport and parking gates

With a 10,500ft (3,200m) runway the airport is large enough to accommodate most international wide-body airliners.

The airport layout consists of one main terminal building on the Northern ramp and a cargo facility to the South (the old and initial terminal building).





There are 2 two terminals at Piarco International. Once the passenger terminal for the airport, the south terminal, renovated, today, it serves as the executive terminal along with cargo flights, general aviation and helicopter flights.



Departures

Piarco departure procedure runway 10

All aircraft departing runway 10 Northbound should expect to climb on track 104° until 4100' before commencing their left turn on course.

All aircraft departing runway 10 Southbound should expect to climb on track 104° until 2200' before commencing their right turn on course.

Piarco departure procedure runway 28

All aircraft departing runway 28 Northbound should expect to climb on track 284° until 4100' before commencing their right turn on course. Because of the proximity of Maiquetia (SVZM) airspace that right turn must commence within 20DME of the POS VOR.

All aircraft departing runway 28 Southbound should expect to climb on track 284° until 2200' before commencing their left turn on course. Because of the proximity of Maiquetia airspace turn must commence within 15DME POS VOR.

Note: Piarco doesn't offer any Standard Instrument Departures (SID).

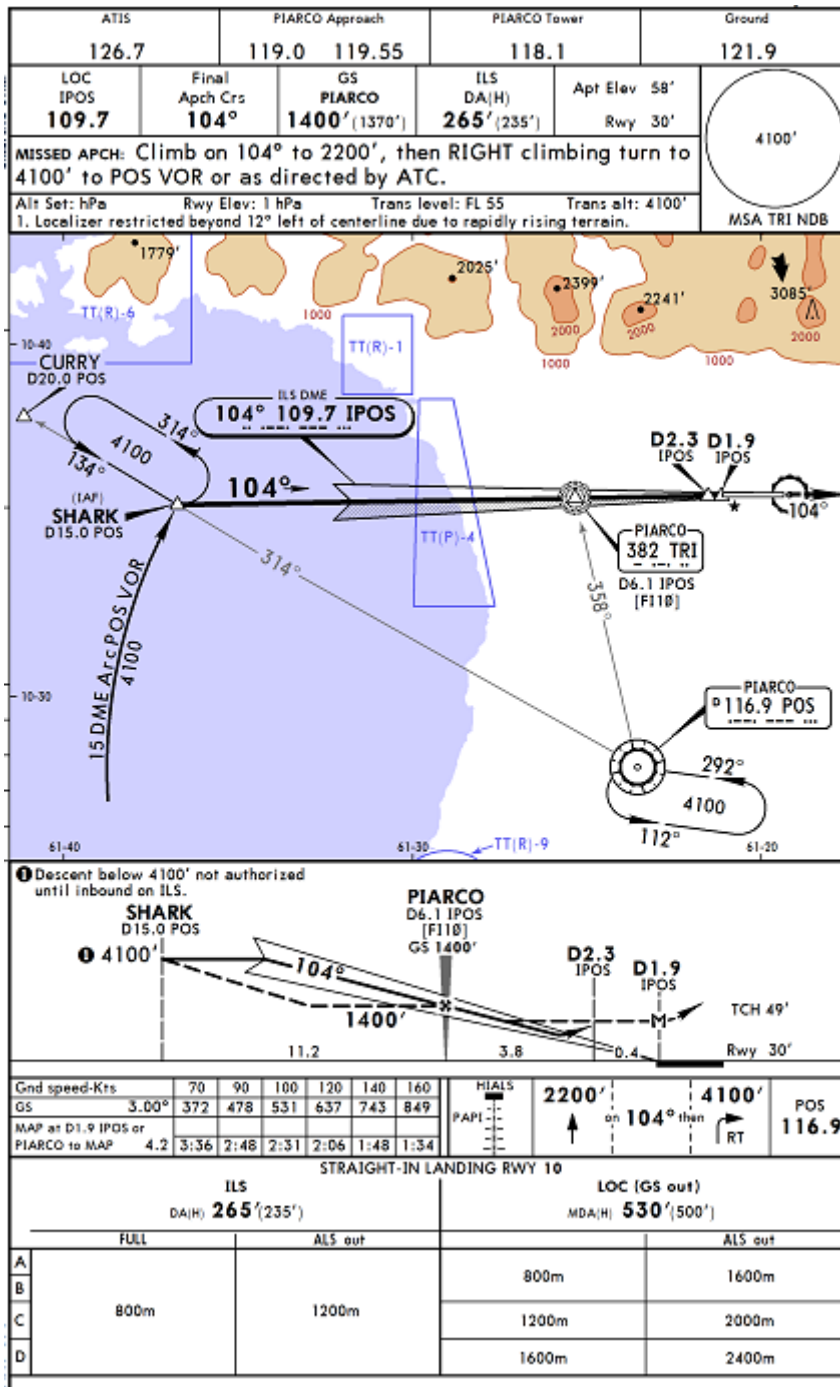
Piarco arrival approaches

Piarco offers a VOR ILS approach for runway 10 only and a RNAV (GNSS) for both runways.

VOR ILS RWY 10

When expecting the VOR ILS runway 10 approach, pilots should expect to the transition fixes SHARK or CURRY at an altitude no lower than 4100'.

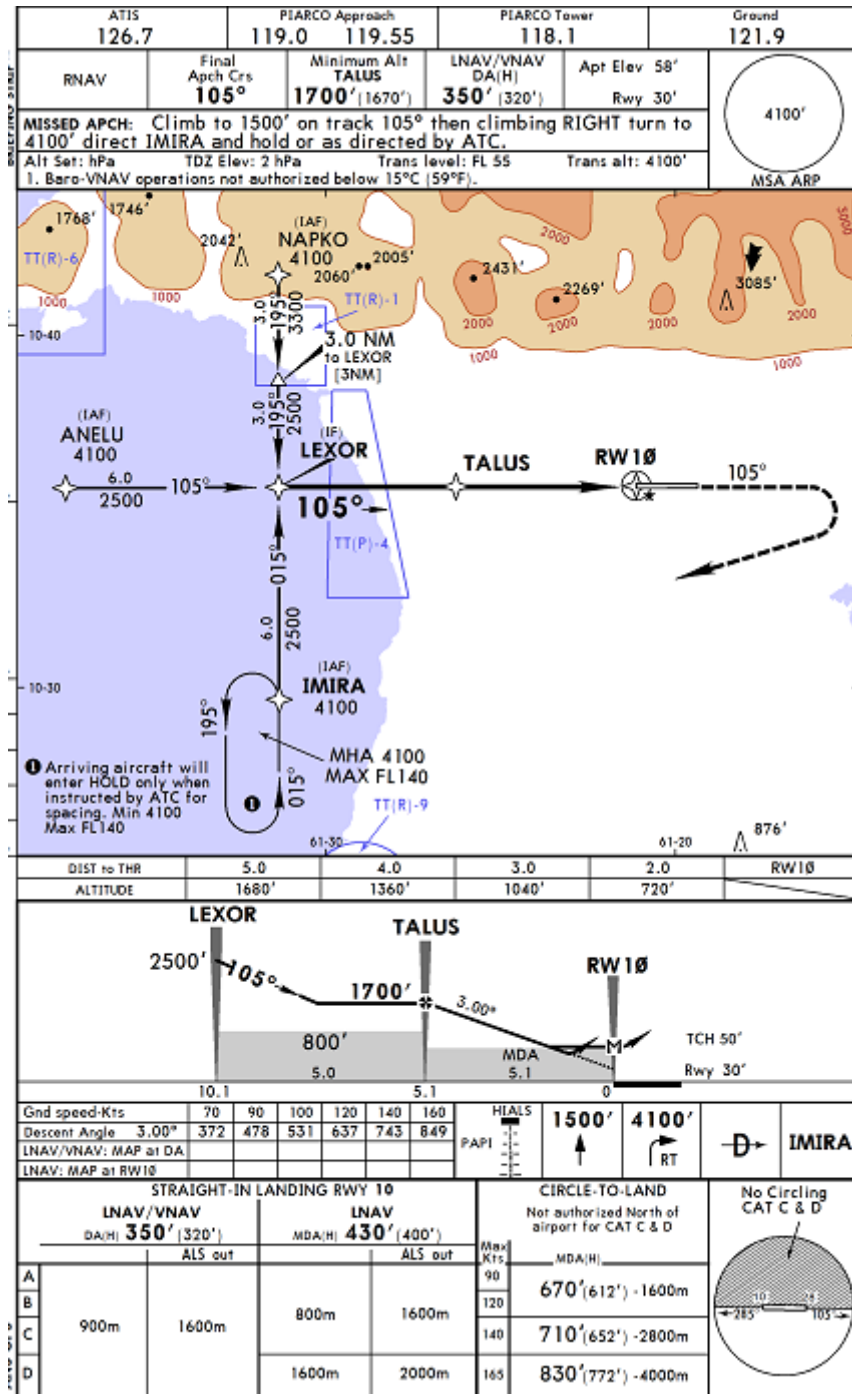
The ILS frequency: **109.70** and identifier: **IPOS** for a final approach course of **104°**.



RNAV (GNSS) RWY10

Commonly used here at Piarco, the RNAV runway 10 has 3 transition points:

- NAPKO to the North (minimum 4100')
- ANELU to the West (minimum 2500')
- IMIRA to the South (minimum 2500')



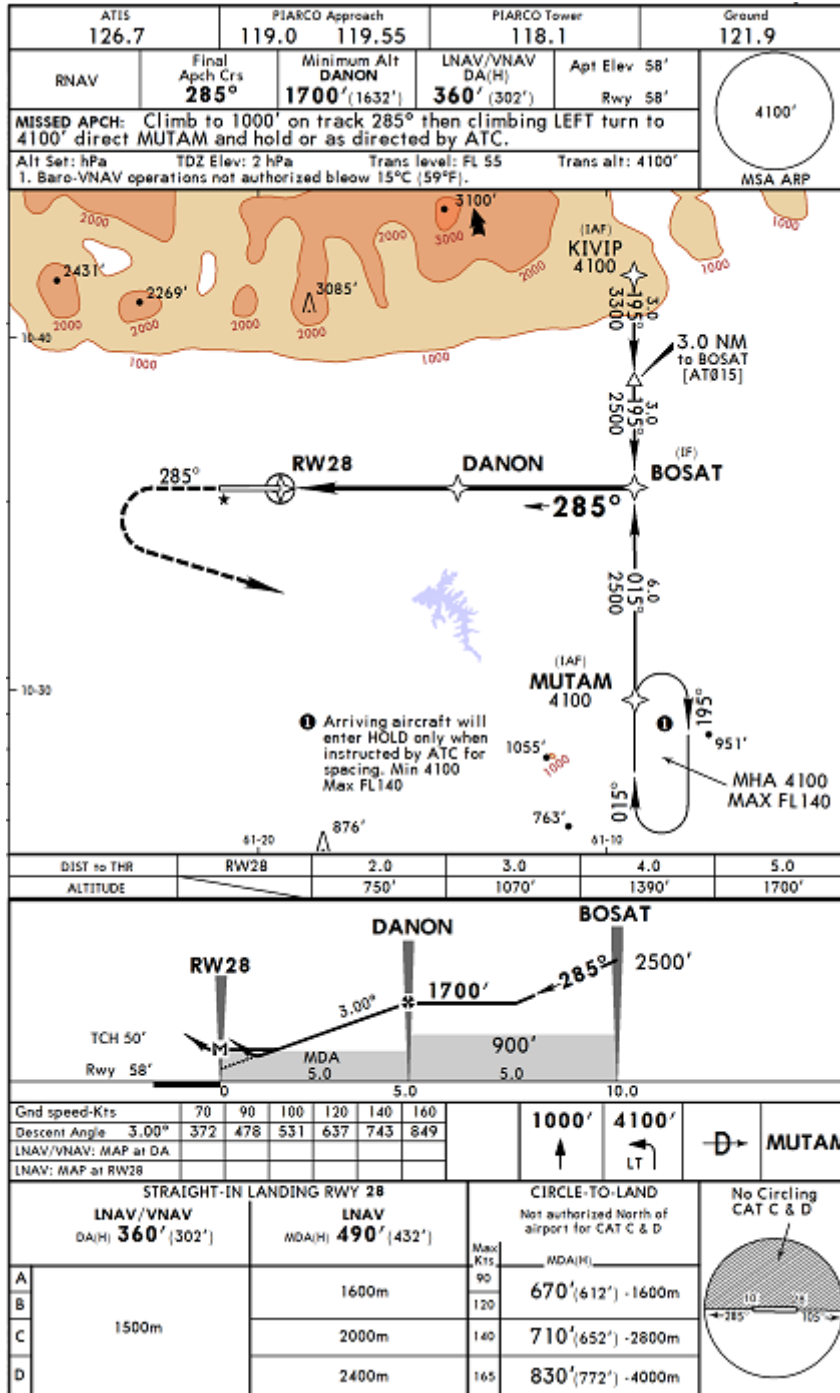
All aircraft should be at 2500' by LEXOR.

RNAV (GNSS) RWY28

The RNAV runway 28 has 2 transition points:

-KIVIP to the North (minimum 4100')

-MUTAM to the South (minimum 4100')



All aircraft should be at 2500' by BOSAT.

Holding procedures at Piarco TTPP

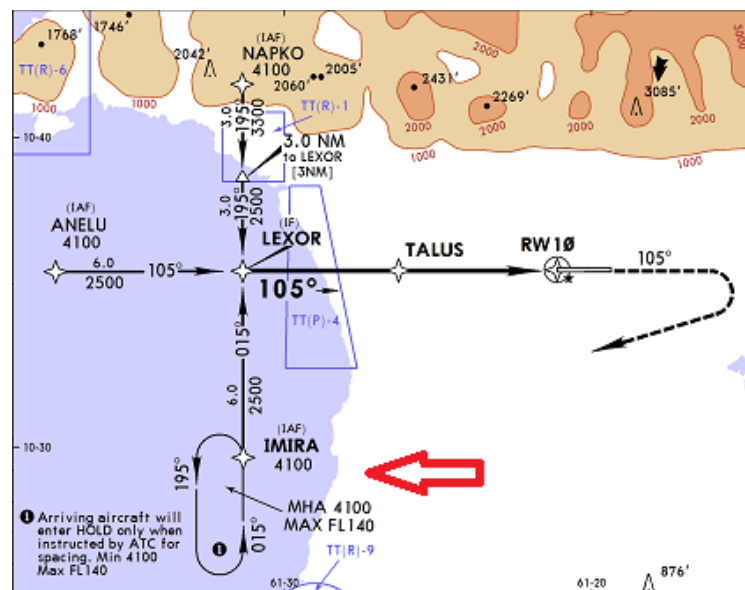
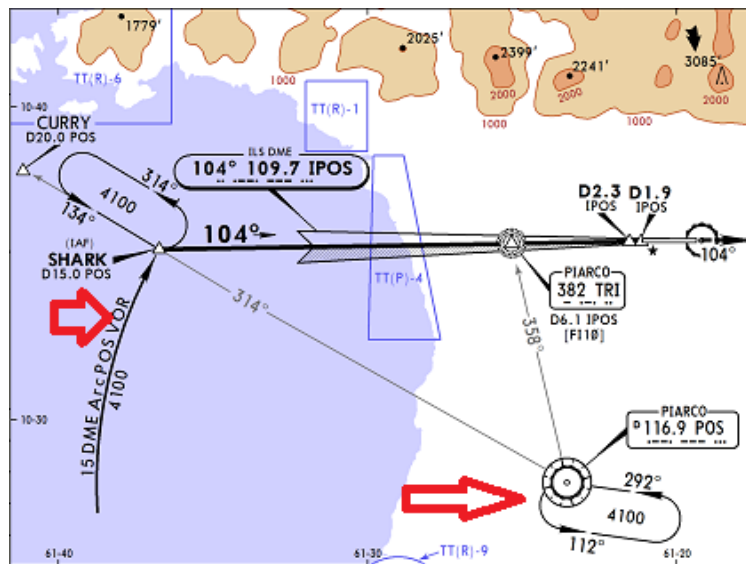
In the event of ATC needing to hold traffic, pilots can usually expect to be hold at the POS VOR (Piarco) on at left hand circuit.

There are other fixes used for holding traffic depending on the type of approach in use.

Runway 10 in use:

When runway 10 is in use the following holding fixes are to be expected:

- POS VOR
- SHARK for the ILS VOR RWY10
- IMARA for the RNAV RWY10

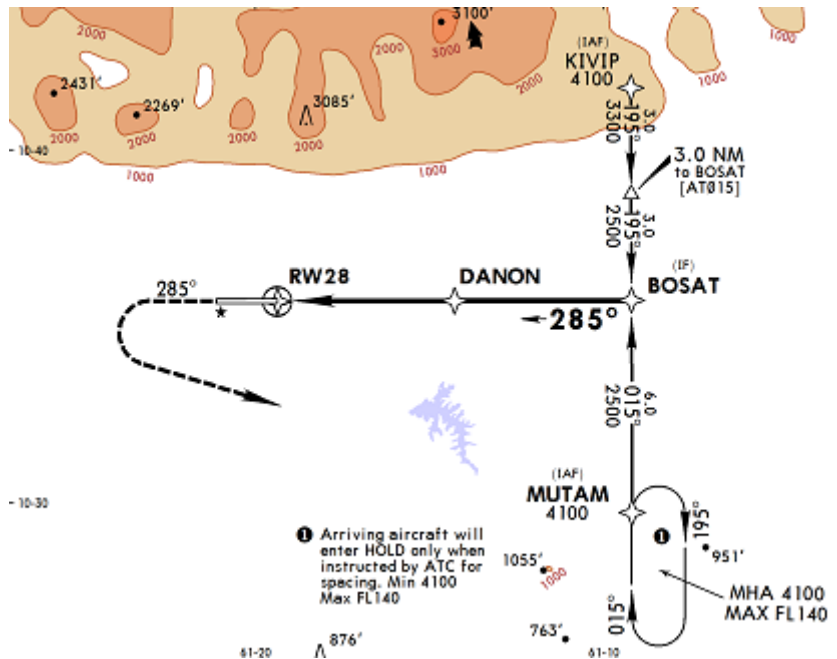


Runway in use 28:

When runway 10 is in use the following holding fixes are to be expected:

-POS VOR

-MUTAM



ATC Clearances at Piarco

Piarco Air Traffic Zone (ATZ) is a **class D** airspace from ground up to 2000ft.

All flights are subject to ATC clearance, yes including all VFR traffic.

At Piarco, the IFR clearance is simple. It is a modified CRAFT method, where the departure frequency is omitted from the clearance.

Here is an example of an ATC IFR clearance at Piarco:

TPPP_GND: Piarco clears JetBlue 1818 to JFK via the UG449 ANADA flight planed route, after departure maintain runway heading until 4100 feet then left turn on course, climb FLO70, squawk 7201.

Airlines and destinations

Piarco International Airport has scheduled service to destinations in the Caribbean, the United States, Canada, Central America, South America and Europe.

Passenger

Air Canada Rouge – ROU - Rouge

Toronto–Pearson CYYZ

American Airlines – AAL - American

Miami KMIA

British Airways – BAW - SpeedBird

London–Gatwick EGKK via St Lucia Hewanorra TLPL

Caribbean Airlines – BWA – Caribbean Airlines

Antigua **TAPA**, Barbados **TBPB**, Caracas **SVMI**, Fort Lauderdale **KFLL**, Georgetown–Cheddi Jagan **SYCJ**, Grenada **TGPY**, Havana **MUHA**, Kingston–Norman Manley **MKJP**, Miami KMIA, Nassau **MYNN**, New-York **KJFK**, Orlando **KMCO**, Paramaribo **SMJP**, St. Lucia–Vigie **TLPC**, St. Maarten **TNCM**, St. Vincent-Argyle **TVSA**, Tobago **TTCP**, Toronto–Pearson **CYYZ**

Copa Airlines – CMP - Copa

Panama City **MPTO**

JetBlue Airways – JBU - Jetblue

Fort Lauderdale **KFLL**, New York **KJFK**

LIAT – LIA - Liat

Antigua **TAPA**, Barbados **TBPB**, Georgetown–Correia **SYEC**, Grenada **TGPY**, St. Lucia–Vigie **TLPC**, St. Vincent-Argyle **TVSA**

Surinam Airways – SLM - Surinam

Curaçao **TNCC**, Paramaribo **SMJP**

United Airlines - UAL- United

Houston–Intercontinental **KIAH**, Newark **KEWR**

WestJet - WJT - Westjet

Toronto–Pearson **CYYZ**

Cargo

Amerijet International - AJT - Amerijet

Barbados **TBPB**, Barcelona **SVBC**, Georgetown–Cheddi Jagan **SYCJ**, Maracaibo **SVMC**, Miami **KMIA**,
Santiago de los Caballeros **MDST**, Santo Domingo–Las Américas **MDSD**

Ameriflight – AMF - Amflight

Aguadilla **TJBQ**

ABX Air - ABX - Abex

Barbados **TBPB**, Georgetown–Cheddi Jagan **SYCJ**, Miami **KMIA**

Vensecar Internacional - VEC – Vecar

Barbados **TBPB**, Caracas **SVMC**

Mountain Air Cargo - MTN - Mountain

Aguadilla **TJBQ**

SCENERIES FOR YOUR SIM

XPLANE:

<https://forums.x-plane.org/index.php?/files/file/39690-ttpp-piarco-international-airport-2017/>

FSX/FS2004

[https://secure.simmarket.com/latinvfr-piarco-trinidad-ttpp-\(fr_4548\).phtml](https://secure.simmarket.com/latinvfr-piarco-trinidad-ttpp-(fr_4548).phtml)

